

NEW JERSEY
HISTORIC
TRUST

2018



TABLE OF CONTENTS

Message from the Commissioner	2
Message from the Historic Trust	3
New Jersey Historic Trust Board & Staff	4
Board Bios	4
Year In Review	7
Grant Programs, Completed Projects	9
Capital Preservation Grants	9
Historic Site Management Grants	11
2018 Awarded Projects	12
Preservation New Jersey Fund	12
1772 Foundation Capital Grants	18
Discover NJ History License Plate Fund for Heritage Tourism	22
Easement Highlight, The Rehabilitation of South Orange village Hall	23
About the Trust	24
Index of Sites	25

2018



MESSAGE FROM THE COMMISSIONER

Dear Friends of the Trust,

It's with great pleasure that I present to you this 2018 New Jersey Historic Trust Annual Report, which highlights the work being accomplished on many historic sites in New Jersey that showcase our state's heritage and tell its story.

Historic preservation is a key component to investing in people and communities in New Jersey and I remain wholly committed to preserving New Jersey's historic assets as we continue to identify and provide funding for historic revitalization throughout the state.

New Jersey's rich past is alive in our buildings and landmarks, and not only do they tell our story, but they open the door for cultural enrichment, education, and revitalization opportunities in every single one of our communities.

Preserving historic places brings heritage tourism to the forefront of our local economies, which is crucial for community and economic development. The opportunities for economic growth are endless – millions of dollars are spent through tourism every year and thousands of jobs are created when visitors spend time exploring our various historical destinations. From Lucy the Elephant to our countless Farmsteads, Homesteads, Museums, Canals and Parks – when we restore a historic landmark, we are creating a place that people can visit and enjoy for generations. It truly is an investment in our future.

This is one of the reasons why our Administration is not only focusing on preserving, but we are focusing on investing in more ways to improve the entire state's economy through historic preservation and stewardship. This year alone, the Trust has dedicated over \$1 million to advance capital preservation and planning projects throughout New Jersey.

In my role as Commissioner of the Department of Community Affairs, I will continue to help promote and advance the many revitalization and enhancement opportunities that are available to our 565 municipalities through the Trust. I can't wait to see the results of these valuable investments on our neighborhoods and downtowns throughout New Jersey – the impact is so great and will improve the quality of life for future generations.

I am so proud of the progress that The Trust and its outstanding leadership team has accomplished this year. Governor Murphy and I recognize and honor the growing role that historic preservation plays in our state's economy and look forward to making more leaps and bounds this year!

With regards,

Lieutenant Governor Sheila Y. Oliver
Commissioner
Department of Community Affairs





Dear Friend to Preservation:

What started as a quiet year quickly sped up as the Historic Trust launched its second Preserve New Jersey grant round, continued its successful grant relationship with the 1772 Foundation, and made special projects come to life:

- The staff greatly enjoyed working with the OnDemand video team to create, film and deliver a short-form documentary with a powerful message about preservation. Read more on page #
- The marketing campaign for the Discover New Jersey History license plate utilized a variety of media, images, colors and a succinct message to attract a new and younger audience to purchase the plate.
- The permanence of the Preserve New Jersey funding allowed the Board of Trustees to explore new ideas at its retreat, enabling the Trust’s group of leaders to dream big about using loan funds in new ways, creating partnerships with community development agencies, and brainstorming ways for preservation to invest in community growth and pride.

By the end of the “quiet” year, the Trust would be interviewing for new staff positions and planning to announce several new grant opportunities. 2019 will be noisy for sure!

Regards,

Janet W. Foster
Chair

New Jersey Historic Trust Board of Trustees

Dorothy P. Guzzo
Executive Director

New Jersey Historic Trust





NEW JERSEY HISTORIC TRUST BOARD & STAFF

CITIZEN MEMBERS

- Janet Foster, Chair, Morris County
- Deborah Marquis Kelly, Burlington County
- Peter Lindsay, P.E., Sussex County
- Kenneth Alan Miller, Vice Chair, Morris County
- Katherine Ng, Secretary, Burlington County
- Meme Omogbai, Immediate Past Chair, Somerset County
- Chris Perks, P.E., Camden County
- Patricia Anne Salvatore, Cape May County

EX-OFFICIO MEMBERS

- Lt. Governor Sheila A. Oliver, Commissioner, Department of Community Affairs
Represented by Sean Thompson, Director, Office of Local Planning Services
- Catherine R. McCabe, Acting Commissioner and State Historic Preservation Officer, Department of Environmental Protection
Represented by Katherine Marcopul, Administrator and Deputy Historic Preservation Officer
- Elizabeth Maher Muoio, State Treasurer
Represented by Robert Tighue (Treasurer), Division of Property Management and Construction

STAFF

- Dorothy P. Guzzo, Executive Director
- Glenn Ceponis, Principal Historic Preservation Specialist
- Erin Frederickson, Historic Preservation Specialist
- Catherine Goulet, Principal Historic Preservation Specialist
- Carrie Hogan, Senior Historic Preservation Specialist/Fiscal Officer
- Paula Lassiter, Clerk/Typist
- Haley McAlpine, Historic Preservation Specialist
- Ashley Parker, Program Assistant

BOARD BIOS

Janet W. Foster, Morris County

An architectural historian and historic preservation consultant, Janet W. Foster is a proponent of New Jersey and its vernacular architecture. She teaches and writes on the topic and is an adjunct faculty member in the Columbia University Historic Preservation Program. She serves on the Madison Borough Historic Preservation Commission, and on the Trustees of the Hartley Dodge Memorial. Ms. Foster was elected Chair in 2016 after serving two years as Vice Chair, and serves on the Grants and Loans, Education and Outreach, and Legislation and Policy Committees.

Deborah Marquis Kelly, Burlington County

Ms. Kelly is a former executive director of Preservation New Jersey and since 1996 has been an independent historic preservation consultant through her company, Preservation Partners. She is the co-author of the New Jersey Women's Heritage Trail, the current secretary of the Chesterfield Township Historical Society, and chair of the newly-formed Chesterfield Township Historic Preservation Commission. She is a past member and chair of the NJ Historic Sites Council and served on the Chesterfield Township Planning Board for 20 years. Ms. Kelly chaired the Trust from 2009-2011, continues to chair the Grants and Loans Committee, and serves on the Legislation and Policy and Strategic Planning Committees.

Peter Lindsay, PE, Sussex County

Mr. Lindsay has more than thirty-eight years of professional experience in engineering and holds a Master's degree in Mechanical Engineering from New Jersey Institute of Technology. Presently employed in private industry, Mr. Lindsay is a life-long New Jersey resident. His former residence in Hardyston Township was one of the earliest homes built by the Joseph Sharpe family in 1809. Mr. Lindsay participated in the structural stabilization project of the Hamburg Presbyterian Church's 1868 sanctuary. His other interests include antique automobiles, history, and genealogy. He is a member of the Sons of Union Veterans of the Civil War and several classic car clubs in addition to professional organizations. Mr. Lindsay serves on the Acquisitions and Easements Committee as well as the Grants and Loans Committee.

Kenneth A. Miller, Morris County

Mr. Miller is retired from the financial services industry, and serves in several volunteer positions, including treasurer of the Joint Free Public Library of Morristown and Morris Township Foundation. He has been involved in preservation as a Commissioner and Chair of Morristown's Historic Preservation Commission, as well as restoring his private residence, a National Historic Landmark. Mr. Miller was elected Vice Chair in 2016, after serving for three years as Treasurer. He chairs the Acquisitions and Easements and Strategic Planning Committees.

Katherine Ng, LEED AP, Burlington County

Ms. Ng is the Vice President of Wu & Associates, a general construction firm who has received widespread recognition for their restoration and preservation work from notable sources including the National Trust for Historic Preservation, state agencies, and local preservation organizations. Holding a Master's in Psychology from the University of California, Los Angeles, Ms. Ng's focus centers on the integration of culture into the fabric of sustainable community growth. She is an active proponent of historic preservation, having worked on the post-September 11th restoration of historic Chinatown in lower Manhattan; having served as a past Advisory Board Member for the Pennhurst Memorial and Preservation Alliance to develop an international site of conscience; and serving as an invited speaker for professional and collegiate preservation audiences. Ms. Ng was elected Secretary in 2016. She chairs the Legislation and Policy Committee and serves on the Strategic Planning Committee.

BOARD BIOS

Meme Omogbai, MBA, CPA, CGMA, Somerset County

Named one of 25 Influential Black Women in Business by The Network Journal in 2010, Ms. Omogbai has been a leader in the nonprofit, corporate, museum and government sectors. As the first American of African descent named Board Chair of the American Alliance of Museums (AAM), Ms. Omogbai co-authored its ground-breaking strategic plan, The Spark, and led the initiative to rebrand the AAM as a global alliance. As Co-Director, Interim CEO, COO, CFO and Trustee, she led a major transformation in operating performance at the 105-year-old Newark Museum. Her program of financial accountability and innovation propelled the organization to the pinnacle of achievement with four consecutive years of 4-star ratings for superior management. Ms. Omogbai's background includes serving as the first minority and female Deputy Assistant Chancellor of New Jersey's Department of Higher Education. Her multifaceted earlier experience includes Big 4 Global Public Accounting, expertise in finance and management with the New Jersey Casino Control Commission and Barbizon Corporation. She currently serves as a Director on the Advisory Board of Montclair State University's College of Science & Mathematics. She has also been appointed by the Emir of Borgu Kingdom to the Think Tank on the cultural infrastructure of the Emirate and establishment of its monuments and history museum. She is the Immediate Past Chair, after previously serving two years as Chair and two as Vice Chair.

Chris Perks, PE, Camden County

Mr. Perks is a licensed professional engineer, professional planner, and a certified municipal engineer. He is currently the Director of Engineering for the Philadelphia Parking Authority. His former consulting firm managed comprehensive renovations of the historic Philadelphia Academy of Music, the Philadelphia Water Works, and fifty-three Philadelphia Free Library buildings, fifteen of which were historic Carnegie buildings. Mr. Perks was the chairman of the Southern New Jersey Development Council and the Philadelphia Board of Building Standards. He also served on the New Jersey State Geographic Information Council, and the Camden City Historic Preservation Commission. He is currently on the boards of the Senator Walter Rand Institute of Public Affairs at Rutgers, Philadelphia Hospitality, the New Freedom Theatre, and he is the president of the Camden County Historical Society. Mr. Perks served as chairman of the New Jersey Historic Trust 2011-12, and as treasurer 2004-2005. He resides in the City of Camden.

Patricia Anne Salvatore, Cape May County

Ms. Salvatore founded, developed, and preserved/restored two history sites as nonprofit museums: Historic Cold Spring Village (where she currently serves as executive director) and Naval Air Station Wildwood Aviation Museum. She is a leader locally and regionally in promoting heritage tourism, having served on the board of the South Jersey Cultural Alliance since 1994 and the Cape May County Chamber of Commerce for nine years. Her contributions to historic preservation, interpretation and heritage tourism have been recognized by: the New Jersey Association of Museums John Cotton Dana Award, the Preservation New Jersey Sarah B. Fiske Award for Legacy & Leadership, the NJ State Federation of Women's Clubs and Douglass College of Rutgers University, the American Association for State & Local History, the Advocates for New Jersey, the New Jersey Governor's Volunteer of the Year Award, the Smithsonian Magazine/Traveler's Conservation Foundation, and the NJ Governor's Conference. Ms. Salvatore chairs the Education and Outreach Committee as well as the Cape May County Cultural and Heritage Commission.



the rich documentary heritage of New Jersey and its people.

Located in the State House cultural complex in downtown Trenton, the State Archives is the state's official repository and research center for New Jersey public records of enduring historical value. Visitors will find unparalleled primary resources for researching genealogy, the settlements of New Jersey's towns and counties, military history, transportation, agriculture, governmental and social issues, and the state's prominent role in our nation's history.



Throughout the year, the Historic Trust staff helps to plan and support educational workshops and conferences that reach out to the history and historic preservation audiences. The Trust works with the Historical Commission to design the "Best Practices" workshop for history nonprofit organizations that address organizational and building stewardship issues. The staff also attend and exhibit at outreach events sponsored by other organizations – the NJ State History Fair, Monmouth County's Archives and History Day, the Middlesex County History Day, In

addition, the Historic Trust's board members regularly attend events that celebrate a project's milestone, such as a ribbon cutting or ground breaking.

2018 CONFERENCE

The 2018 History and Historic Preservation Conference in Paterson was a dynamic two-day event that included bus and walking tours, 17 classroom sessions, panel discussions, a student poster competition, and an opening reception at the Hamilton Club, which exhibits its collection of sculptures by Gaetano Federici. Once again, "Building a Place for History" received generous financial support from its nearly 30 sponsors, many of whom were showcased in the exhibitor's area that was open on the second full day of the conference.



ON DEMAND VIDEO

In 2018, the Historic Trust was contacted by the producers of "On Demand hosted by Rob Low" to produce a five minute short form documentary featuring the work of the Historic Trust and the need for preserving our history. Research and script writing were a collaboration between the Trust and the show's producers. Filming took

2018

2018

place in early November with the launch expected during National Historic Preservation month in 2019. The segment will air on PBS with a special introduction by Rob Lowe. Various other media outlets will air a one minute commercial highlighting the Trust and historic preservation in New Jersey.

Historic Preservation Continuing Education

The Historic Preservation Continuing Education Program at Rutgers University-Camden was launched in 2016 through a partnership between the New Jersey Historic Trust and the Mid-Atlantic Regional Center for the Humanities

(MARCH). Designed for those who desire to gain a deeper understanding of the vocabulary and discipline of historic preservation, students learn from professionals working in the field to gain a more realistic perspective on how the tangible remains of our past can be integrated within current environments. In 2017, the program began offering a Certificate in Historic Preservation, and in 2018 the program presented two full semesters of courses and one-day workshops. Select courses provide American Institute of Architects (AIA) continuing education credits through a partnership with Preservation New Jersey. For more information, visit: www.preservation.rutgers.edu.





GRANT PROGRAMS COMPLETED PROJECTS

The New Jersey Historic Trust awarded grants under the guidelines for the Garden State Historic Preservation Trust Fund since the Garden State Preservation Trust was established by a voter-approved ballot initiative in 1998, continuing the work of the previous bond-funded grant program. Bond referendums in 2007 and 2009 provided additional funds. Since 1990, more than \$144 million in matching grants have been awarded for 800 capital preservation and planning projects throughout the state.

Two categories of grants are awarded through the program. Historic Site Management Grants, up to \$50,000, help support planning exercises that promote effective management at historic sites. Capital Preservation Grants, up to \$500,000, help support construction expenses related to the preservation, restoration, and rehabilitation of historic properties and associated architectural and engineering expenses. In 2018, more than \$2.7 million was reimbursed for construction and planning activities. The following four capital and nine planning projects were successfully completed and closed out.

CAPITAL PRESERVATION GRANTS

Reeves-Reed Arboretum, Summit, Union County

A \$21,000 matching grant helped fund the restoration of the Primrose Path Wall in The Clearing by dismantling and rebuilding the stone wall and replanting the area in accordance to historic landscape plans.

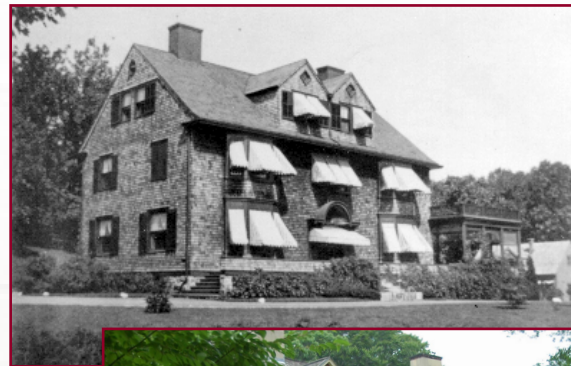
Nathan Cooper Grist Mill, Chester, Morris County

A \$13,200 grant to the Morris County Park Commission helped fund the restoration of two deteriorated sill beams in the partially restored and operating water-powered flour mill built in 1826.

Landing Railroad Station, Roxbury Township, Morris County

A \$150,000 matching grant to the Lake Hopatcong Foundation helped fund the installation of a clay roofing system and restoration of a parapet using the same roofing material as originally installed in 1911.

Reeves-Reed Arboretum: Before - 1990s

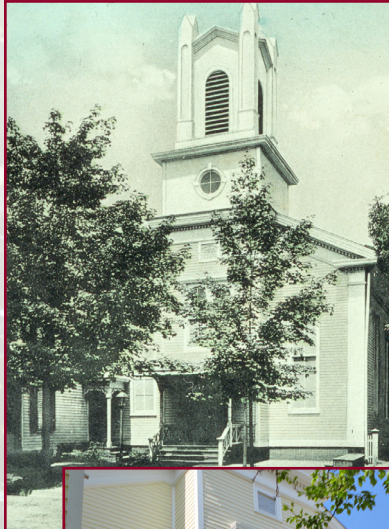


Reeves-Reed Arboretum: After - 2010

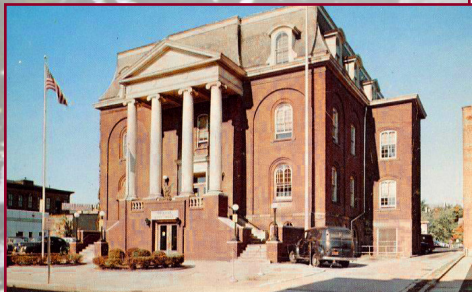
First Presbyterian Church of New Vernon, Harding Township, Morris County

A \$150,000 matching grant to the Federal style church built in 1834 helped fund the stabilization and preservation of the cedar shake roof and bell tower constructed by Master Builder Elijah Hopping.

*First Baptist Church and Parsonage:
Before - 1908*



*First Baptist Church and Parsonage:
After - 2018*



Orange City Hall Before - 1940's



Orange City Hall After - 2009

First Baptist Church and Parsonage, Allentown, Monmouth County

A \$12,078 matching grant to the Allentown Public Library Association, Inc. helped fund the restoration of the front entryway including flooring, electricity and lighting, custom interior doors, and painting. The church was built in 1879 and is now used as a public library.

Gaetano Federici Monument, Passaic County

A \$16,200 grant to Passaic County helped fund the restoration, cleaning and removal of dirt, oxidation and incrustation of the monuments. The monuments of Congressman James Fleming Stewart and Senator William Hughes sculpted by Gaetano Federici in the early 1900s were restored to their historical bronze colors.

East Point Lighthouse, Maurice River Township, Cumberland County

A \$300,000 matching grant to the Maurice River Historical Society helped fund the second phase of the project which included an archeological survey, interior woodwork restoration and reconstruction of floors and doors, restoration of interior finishes including plaster and paint, barrier-free access to the first floor, and restoration of historic paths, based on archeology and historic photographs, as well as restoration and rehabilitation to the adjacent Oil Storage House.

Orange City Hall, Orange City, Essex County

A \$140,500 matching grant to the City of Orange Township helped fund a cyclical maintenance plan and repair of the brick facades and stone entrance stair, replace missing slate roof shingles, and repair exterior wood columns trim, doors, and windows based on a Preservation Plan funded by the Trust in 2006.

HISTORIC SITE MANAGEMENT GRANTS

Incline Plane #10 West, Phillipsburg, Warren County

A \$45,000 matching grant to Warren County helped fund the preparation of an archaeological study and conditions assessment of the plane built in 1831 that enabled the 109-mile Morris Canal to overcome a forty-four-foot elevation change.

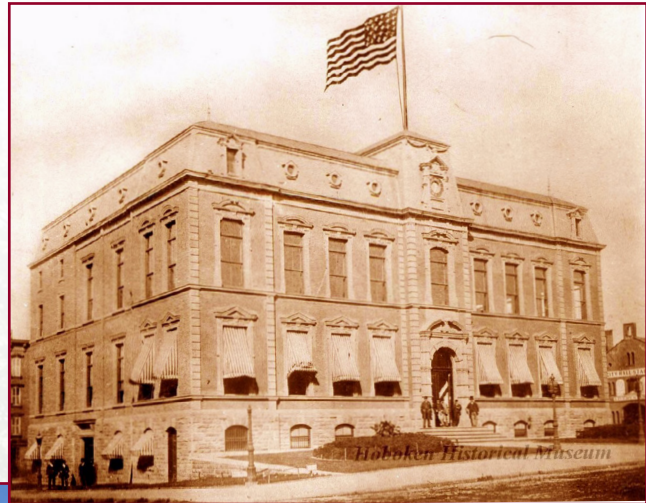
Hoboken City Hall, Hoboken City, Hudson County

A \$37,500 matching grant to Hoboken City helped fund the preparation of a preservation plan that will guide future repair and restoration to the late 1800 civic building designed by Francis G. Himpler.

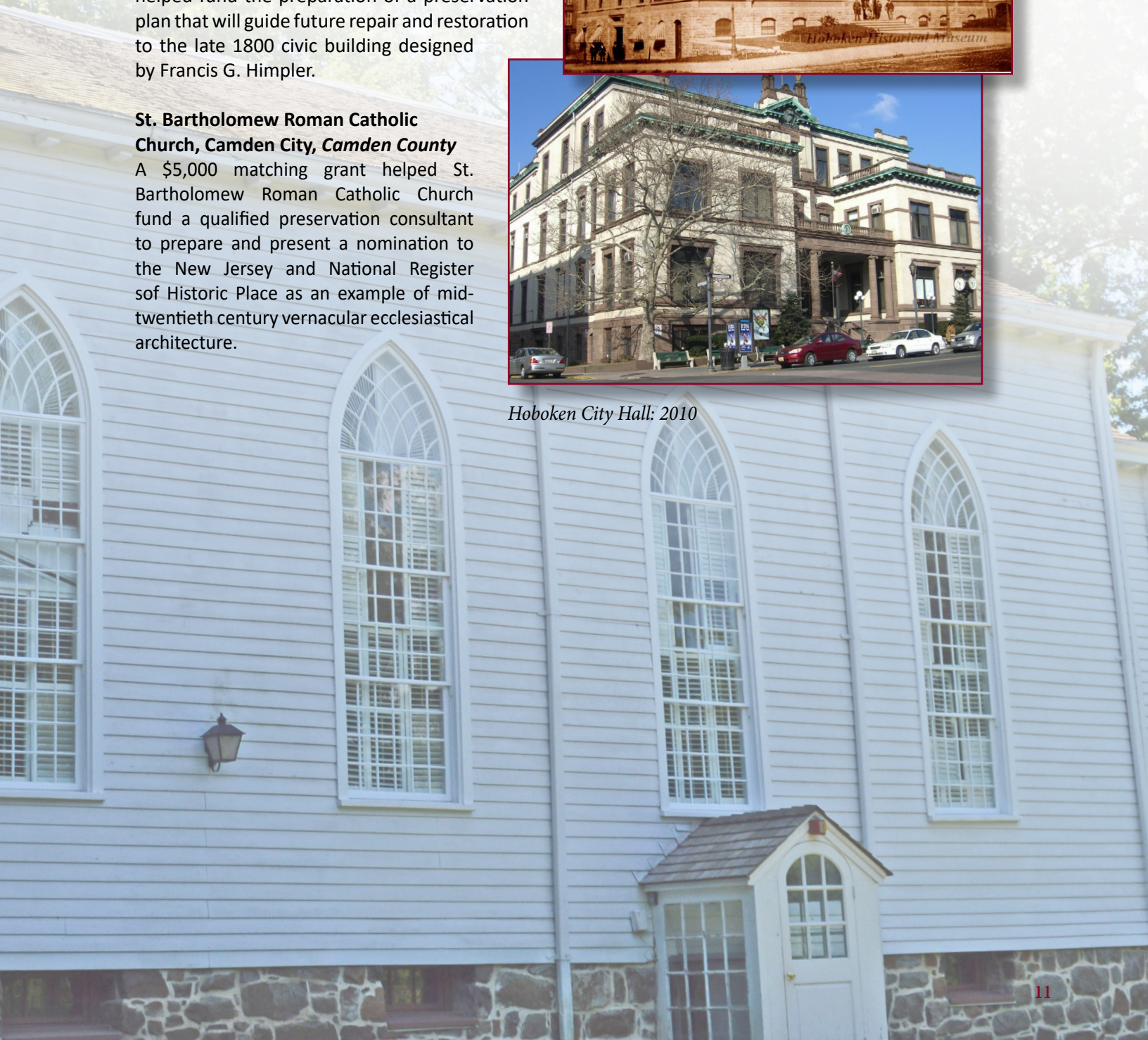
St. Bartholomew Roman Catholic Church, Camden City, Camden County

A \$5,000 matching grant helped St. Bartholomew Roman Catholic Church fund a qualified preservation consultant to prepare and present a nomination to the New Jersey and National Register of Historic Place as an example of mid-twentieth century vernacular ecclesiastical architecture.

Hoboken City Hall: 1800's



Hoboken City Hall: 2010



2018

AWARDED PROJECTS

PRESERVE NJ HISTORIC PRESERVATION FUND

HISTORIC SITE MANAGEMENT GRANTS

In 2018, the Historic Trust awarded 1,037,621 in matching grant funds to 33 preservation planning projects in 17 counties. The second round of the Preserve NJ Historic Preservation Fund, provided funding for Historic Site Management grants for planning projects only. Funded projects included archaeological surveys, National Register nominations, preservation plans, conditions assessments, design and construction documents and other projects that assist organizations in managing and stewarding their heritage buildings and sites.

Atlantic County

Fire Station #8, Atlantic City

A \$50,000 grant to Fire Station #8, will help fund the preparation of a nomination for listing in the New Jersey and National Register of Historic Places, a condition assessment, and construction documents to guide adaptive reuse of the third and fourth floors of this visual articulation of Atlantic City's fire fighting history.

Bergen County

James C. Rose Residence, Ridgewood Village

A \$37,224 grant to the James Rose Center will help fund the preparation of a preservation plan. The home was the residence of James C. Rose, an important Modern landscape architect and design theoretician whose ideas and approaches are evident throughout the structure.

Camden County

Greenfield Hall, Haddonfield Borough

A \$24,325 grant will help fund the preparation of a preservation plan of Greenfield Hall, where Elizabeth Haddon Estaugh resided, and who is linked with the founding of Haddonfield.

Cape May County

Naval Air Station Wildwood Aviation Museum: Hangar #1, Rio Grande

A \$29,813 grant will help the preparation of an update to a 2004 preservation plan. Hangar #1 is of national significance and is a Save America's Treasure site.

Historic Cold Spring Village, Lower Township

A \$37,107 grant will help fund the preparation of a preservation plan, a Phase IA archaeological investigation, and a tree management plan for the property. Historic Cold Spring Village is listed in the New Jersey Register of Historic Places and is the best example of an assembled village in New Jersey.

Judge Nathaniel Foster House, Lower Township

A \$38,850 grant will help fund the preparation of design and construction documents, an architectural conservator report, professional construction cost estimation, a Phase IA archaeological investigation, an interpretive and furnishings plan, and a hazardous materials audit.

Cumberland County

Cumberland County Courthouse, Bridgeton City

A \$50,000 grant will help fund the preparation of construction documents and specification for restoration of exterior masonry, trim elements at the bell clock tower, and other exterior elements. The courthouse was constructed in 1909 following designs of the Philadelphia architectural firm of Watson & Huckel.



Cumberland County Courthouse

Old Stone School, Greenwich Township

A \$11,109 grant will help fund the preparation of a structural analysis, conditions assessment and construction documents to this contributing resource within the New Jersey and National Register listed Greenwich Historic District.

Gloucester County

Moravian Church, Woolwich Township

A \$43,186 grant to the Gloucester County Historical Society will fund the preparation of a preservation plan, archaeological investigation and plan for the site. The early American Meeting house style church dates to the 1780s.

West Jersey Depot Train Station (Glassboro Train Station), Glassboro Borough

A \$7,500 grant will help fund the preparation of a nomination for listing in the New Jersey and National Registers of Historic Places. This 1867 train depot played an integral role in the development of Glassboro, fueling local industry and higher education.

Hudson County

Hoboken Firehouses & Firemen's Monument, Hoboken City

A \$37,500 grant will help Hoboken City fund the completion of a condition assessment with prioritized treatment recommendations and cost estimates for four firehouses. The firehouses are listed in the New Jersey and National Register of Historic Places and are still operational.

Hoboken Free Public Library and Manual Training School, Hoboken City

A \$50,000 grant will help Hoboken City fund architectural design services for renovation and restoration, new HVAC and LEED certification. The 1896 Italian Renaissance Revival style building was designed by local architect, Albert Beyer.

Hunterdon County

Mahlon Fisher Residence (Doric House), Flemington Borough

A \$20,625 grant will help fund the preparation of an adaptive reuse plan and an assessment of the existing mechanical and electrical systems. Constructed in 1845 it is one of the many houses built by local architect Mahlon Fisher in the Flemington area and is a contributing resource in the Flemington Historic District.

William Lindsay White House, Kingwood Township

A \$30,000 grant will help Kingwood Township fund the preparation of a preservation plan and National Register nomination. The 19th century Georgian and Federal style farmhouse is associated with prolific journalist and World War II correspondent William Lindsay White, whose published work in the 1940s made contributions to journalism and politics.

Mercer County

Andrew and Hannah Drake Farmstead/Brookdale Farm, Pennington Borough

A \$49,090 grant will help fund the preparation of a preservation plan and concept design drawings for potential adaptive reuse of the Large Barn. Constructed between 1830-1850, the Large Barn is a prominent and unusually decorative example of traditional English barns in New Jersey.

Isaac Pearson House, Hamilton Township

A \$50,000 grant will help fund the preparation of a preservation plan, an exterior stabilization plan with mortar analysis and construction documents, and a heritage tourism assessment. Constructed in 1773, this Georgian style house belonged to Isaac Pearson, whose political persuasion and murder at the hands of the Continental Army still pose unanswered questions for local historians.



Andrew and Hannah Drake Farmstead/Brookdale Farm



Middlesex County

Buckelew/Austin/Webb/Pulda Farm Historic District,
North Brunswick Township

A \$21,374 grant will help the North Brunswick Historical Society, Inc. fund the preparation of a preservation plan and a National Register nomination for this intact example of an 18th century rural vernacular Dutch framed building with 19th century extensions.

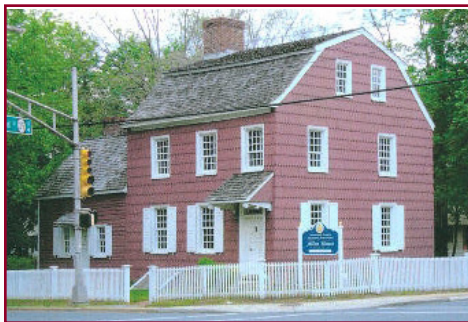


*Buckelew/Austin/Webb/Pulda
Farm Historic District*

Monmouth County

Allen House, Shrewsbury

A \$47,550 grant will help the Monmouth County Historical Society fund an update to a 2008 historic structure report, survey and base drawings, schematic designs, and construction documents for the stabilization of the Dutch and English style Allen House built between 1670 and 1688.



Allen House

Morris County

Ayres' Farm, Denville Township

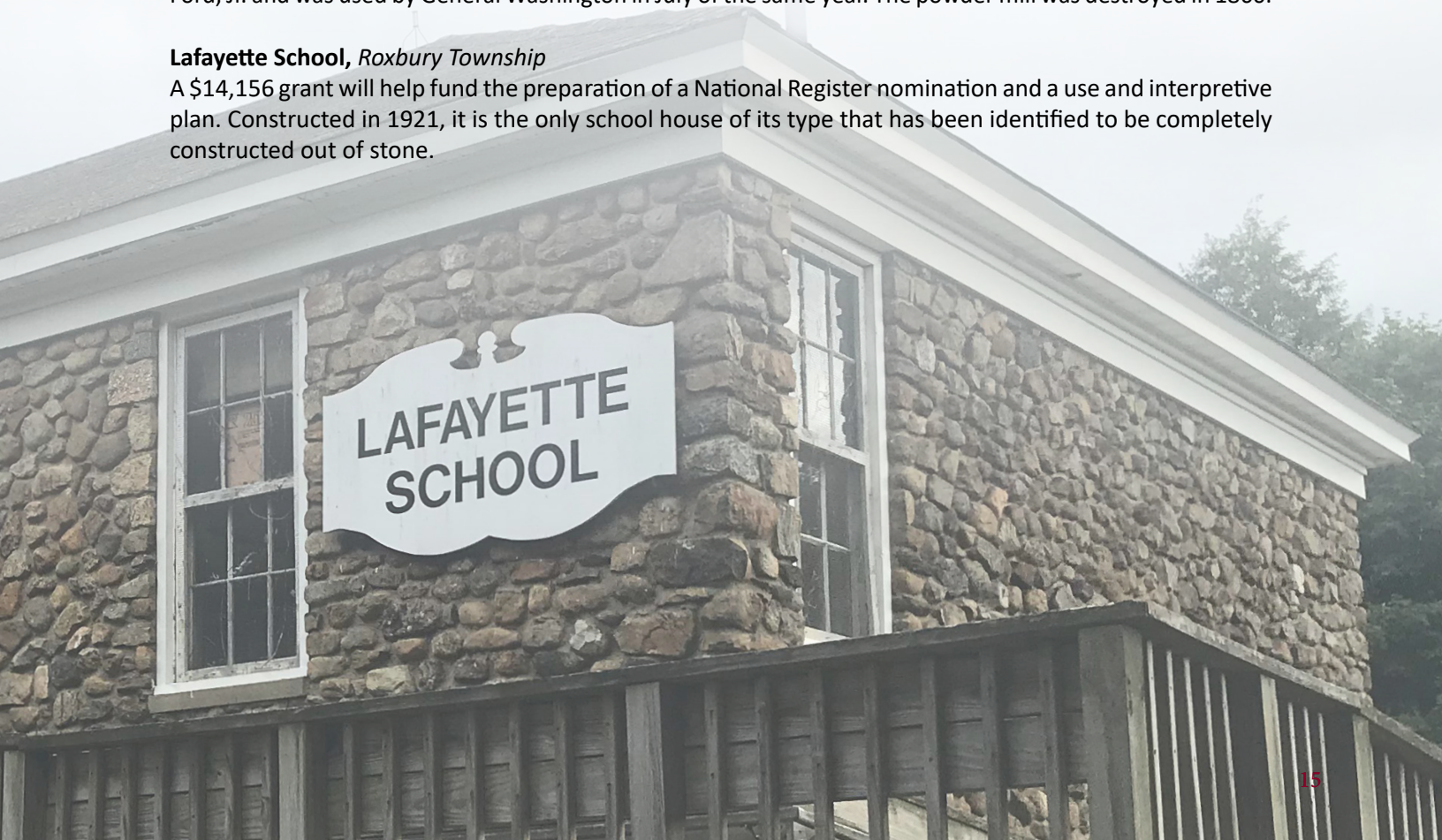
A \$5,550 grant will help fund the preparation of design and construction documents for the Tenant House. Ayres' Farm is a highly intact 19th century agricultural complex and is one of the most complete examples of its type in Morris County.

Jacob Ford Powder Mill Site, Morristown

A \$30,954 grant will help the Morris County Historical Society fund the preparation of an archaeological management plan and a National Register nomination. The powder mill was constructed in 1776 by Jacob Ford, Jr. and was used by General Washington in July of the same year. The powder mill was destroyed in 1860.

Lafayette School, Roxbury Township

A \$14,156 grant will help fund the preparation of a National Register nomination and a use and interpretive plan. Constructed in 1921, it is the only school house of its type that has been identified to be completely constructed out of stone.



Middle Valley Chapel, Washington Township

A \$5,000 grant will help fund the preparation of a condition assessment and the preparation of floor plans for this New Jersey and National Register listed resource in the Middle Valley Historic District.

Passaic County

Lambert Castle, Paterson City

A \$50,000 grant will help fund the preparation of construction documents for Lambert Castle and the Carriage House. Constructed in 1892-1893 for Catholina Lambert, a prominent Paterson industrialist, the sandstone and granite building incorporated towers and crenellated parapets into its castle-like design.

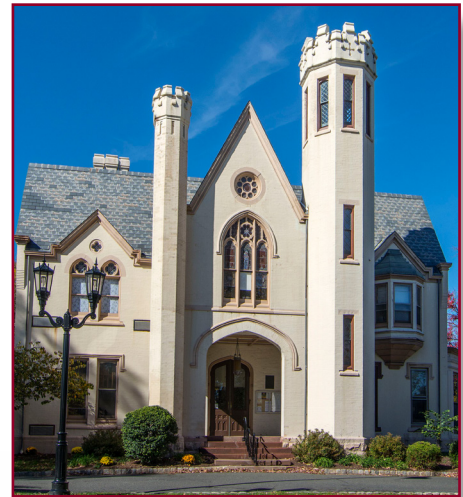
Van Riper Hopper House & Van Duyne House, Wayne Township

A \$28,500 grant will help fund the preparation of a preservation plan for both houses. Both houses are in a township owned park and are open to the public daily.

Somerset County

Daniel Robert House, Somerville Borough

A \$23,535 grant will help the Borough of Somerville fund an update to a 2008 preservation plan. The Gothic Revival style building was designed by Lambert and Bunnell and was built in 1888.



Daniel Robert House

Vorhees Dutch Barn, Bedminster Township

A \$50,000 grant will help fund the preparation of design development and construction documents for the reconstruction of the Vorhees Dutch Barn. The project will also fund a Phase II level archaeological survey. The new world Dutch barn is an excellent example of Dutch agricultural architecture.



Sussex County

Old Newton Academy, Newton

A \$34,225 grant will help the Sussex County Historical Society fund the preparation of a preservation plan and feasibility study. Built around 1802 for use as a school, the exterior of the building was updated with Greek Revival details when it was enlarged in 1831.

Union County

Homestead Farm at Oak Ridge, Clark Township

A \$50,000 grant will help Union County fund the preparation of an historic structure report. The homestead's large 18 room house is the only remaining structure. The main house retains many Federal elements, while the additions on each side feature Italianate and Dutch Colonial influences.



Homestead Farm at Oak Ridge

HERITAGE TOURISM GRANTS

Burlington County

Roebing Wire Company, Florence Township

A \$36,315 grant will help fund the design and fabrication of exterior interpretive signage for the millyard. The John A. Roebing Sons Company Wire Mill was constructed in 1905 and produced bridge wire rope and cable for two landmark suspension bridges – the George Washington Bridge and the Golden Gate Bridge.

Gloucester County

George Morgan Stone House, Washington Township

A \$5,001 grant will help the Washington Township Historic Preservation Commission fund the preparation of a heritage tourism assessment for the George Morgan Stone House and the Old Stone House Village. Constructed in 1736, the house is reportedly the oldest remaining building in Washington Township.



Dey Mansion

Passaic County

Dey Mansion, Wayne Township

A \$41,397 grant will help the Friends of Passaic County Parks fund the development of a county-wide interpretive plan. Originally settled by the Dutch in the 1600s and later formed in 1837, Passaic County has examples of Dutch influenced colonial architecture throughout its region.



1772 FOUNDATION CAPITAL GRANTS

Since 2011, the 1772 Foundation has partnered with the Historic Trust to distribute modest matching grants to historic preservation projects in New Jersey. More than 2.3 million has been awarded to 173 projects for exterior repair and restoration projects and is matched one-to-one by the nonprofit grant recipient. In 2018, the Trust awarded 25 successful applicants with a total of 295,475 in grant funds.

Bergen County

Woman's Club of Rutherford Clubhouse, *Rutherford Borough*

A \$15,000 grant to The Woman's Club of Rutherford will help fund the restoration and replacement of windows with the appropriate wood windows.

Burlington County

Rancocas Lyceum, Westampton Township

A \$14,375 grant to the Westampton Township Historical Society will help fund the restoration of window shutters, thus completing the window restoration which began in 2015.

Cape May County

Historic Cold Spring Village: Ezra Norton House and Heislerville Store, Cape May

A \$13,000 grant to the Historic Cold Spring Village Foundation will help fund the replacement of a cedar shake roof to the Ezra Norton House and the Heislerville Store sill beam repair and the piers will be replaced with more appropriate bricks.

Naval Air Station Wildwood Aviation Museum: Hangar #1, Lower Township

A \$15,000 grant to the NASW Foundation will help fund window repair and replacement for 17 windows in the Hangar's south elevation to match the historic windows.



Woman's Club of Rutherford Clubhouse



Cape May Lighthouse

Cape May Lighthouse, Lower Township

A \$15,000 grant to the Mid-Atlantic Center for the Arts & Humanities will help fund the repainting of the lantern.

Essex County

Kingsland Manor, Nutley Township

A \$7,500 grant to the Historic Restoration Trust of the Township of Nutley will help fund the restoration and painting of two porches and exterior trim.

Gloucester County

Richardson Avenue School, Swedesboro

A \$4,000 grant to the Historical Educational Lodge-Hall Preservatory, Inc. will help fund the restoration of four large windows on the main elevation.

Moravian Church, Woolwich Township

A \$15,000 grant to the Gloucester County Historical Society will help fund window restoration and repainting of the north elevation.

Hudson County

Ellis Island Recreation Pavilion, Jersey City

A \$15,000 grant to save Ellis Island will help fund the stabilization and repair of the entire brick structure.

Loew's Theater, Jersey City

A \$14,750 grant to the Friends of the Loew's, Inc. will help fund a new roof membrane, repairs to marquee supports and flashing.

Hunterdon County

Dunham's Mill/Parry's Mill, Clinton Town

A \$5,200 grant to the Hunterdon Art Museum will help fund the restoration of the chimney.



Moravian Church



John Prall House, Stockton Borough

A \$15,000 grant to the Delaware River Mill Society will help fund the repair and restoration of the two front doors, cornice, rakes, and windows on the south, west, and east elevations.

Mercer County

12 Stockton Street, Princeton

A \$15,000 grant to the Princeton Alumni Corps will help fund repainting the entire house and repairing damaged trim and columns.



John Prall House

Andrew and Hannah Drake Farmstead, Pennington Borough

A \$15,000 grant to StonyBrook-Millstone Watershed Association will help fund the repair and painting of the entire barn structure.

Middlesex County

Cranbury Barn Park, Corn Crib and Wagon House, Cranbury

A \$15,000 grant to the Cranbury Historical and Preservation Society, Inc. will help fund the stabilization and repair of the Wagon House and Corn Crib. Once repaired, the buildings will be used for school tours and events.

Monmouth County

Thomas Baird Homestead, Millstone Township

A \$6,860 grant to The Friends of Millstone Township Historic Registered Property will help fund lightening protection for the house and barn.

Stucile Farms, Ocean Township

A \$14,170 grant to the Township of Ocean Historical Museum will help fund the repair and restoration of the exterior of the Cow Barn to include replacing the roof and restoring the wood siding.

The Squan Beach Life Saving Station No. 9,

Manasquan Borough

A \$6,581 grant to the Squan Beach Life Saving Station Preservation Committee, Inc. will help fund foundation repairs and storm water management integration to mitigate the flooding the building has suffered since Superstorm Sandy.



The Squan Beach Life Saving Station No. 9

Ocean County

Long Beach Island Historical Museum and Fisherman's Cottage, Beach Haven Borough

A \$9,045 grant to the Long Beach Island Historical Association will help fund the Museum's roof repair.



Roger's Locomotive Company Frame Fitting Shop

Passaic County

Roger's Locomotive Company Frame Fitting Shop, Paterson City

A \$15,000 grant to the New Jersey Community Development Corporation will help fund the masonry repointing and window restoration as well as painting of the first story of the building.

Somerset County

Mount Zion AME Church, Montgomery Township

A \$15,000 grant will help fund the replacement of wooden girder, repairs to sills and a corner post, repair and replacement of trim boards and siding, and repair and repointing of the stone foundation.

Sussex County

Van Kirk Homestead Museum, Sparta Township

A \$3,175 grant to the Sparta Historical Society, Inc. will help fund window replacement, roof repair and restoration of columns.

Luscroft Farm, Wantage Township

A \$14,000 grant to The Heritage and Agriculture Association, Inc. will help fund the exterior painting of the front and gable ends of Bunkhouse A and the Isotope Laboratory.

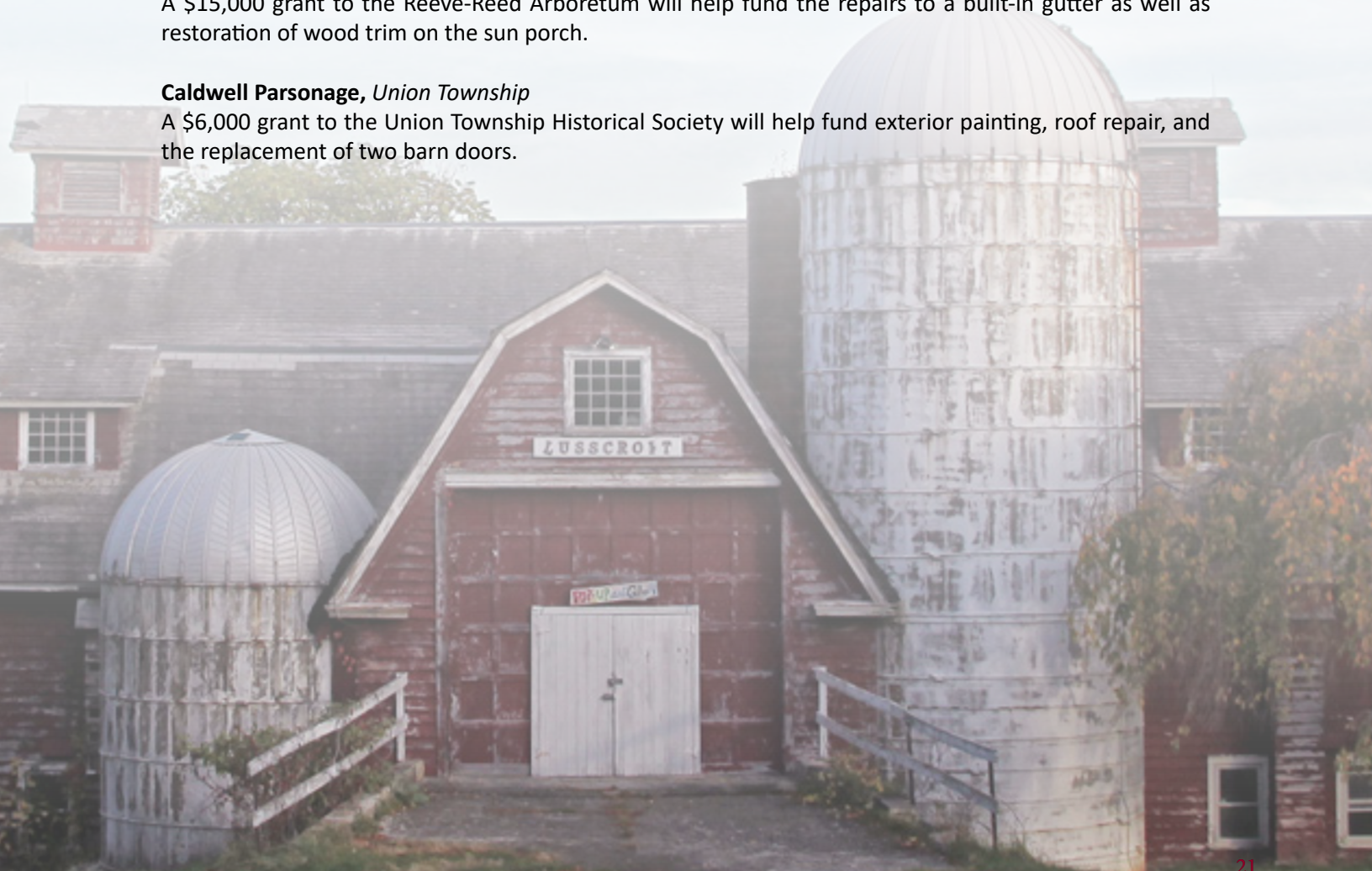
Union County

Reeves-Reed Arboretum, Summit City

A \$15,000 grant to the Reeve-Reed Arboretum will help fund the repairs to a built-in gutter as well as restoration of wood trim on the sun porch.

Caldwell Parsonage, Union Township

A \$6,000 grant to the Union Township Historical Society will help fund exterior painting, roof repair, and the replacement of two barn doors.





LONG BEACH ISLAND MUSEUM

DISCOUNT
FAIR
THURSDAY, AUGUST 11
FROM 10:00 AM TO 5:00 PM
ADULTS: \$10.00
CHILDREN: \$5.00
FREE AT THE MUSEUM

2018

DISCOVER NJ HISTORY LICENSE PLATE FUND FOR HERITAGE TOURISM

The Discover NJ History License Plate Fund provides grants (up to \$5,000) to develop and promote visitor-ready sites as heritage tourism destinations. The Fund was established at the recommendation of the 2010 Heritage Tourism Master Plan for New Jersey. Since 2012, 32 projects have been awarded a total of \$131,274.22. The following grant awards were made in 2018:

Essex County Parks Foundation received \$5,000 to develop interpretive signs for Essex County Reservations.

Princeton Battlefield Area Preservation Society received \$5,000 to help fund a Princeton Battlefield Tour Program.

South Mountain Theater Works & Television Productions received a \$5,000 grant award toward the cost of producing a new season for its popular history series on NJTV called “Drive by History.”

The grant program is supported by income from sales and renewals of the “Discover NJ History” license plate. History supporters pay a one-time fee of \$50 and an annual renewal of \$10, all of which contribute to the fund. The more license plates that are sold, the greater the number of awards that will be made to help grow heritage tourism in New Jersey.

CREATING NEW MARKETING MATERIALS

In order to sell more Discover NJ History license plates and target the Trust’s message to new audiences, the staff worked with a team of marketing professionals to refine its theme and create materials and a marketing plan to publicize the new campaign. First, the team used polling to define the audience for the plate. Second, by using words and phrases from the polling, the team crafted ads and materials emphasizing “Save history now,” “Preserve the past for the future” and “Revolutionize, Revitalize, Rediscover.” Finally, by using social media, the campaign launched a home page for the license plate, and established a presence on Facebook, Twitter, Linked In, and more. Results of the campaign trials will be evaluated next year.



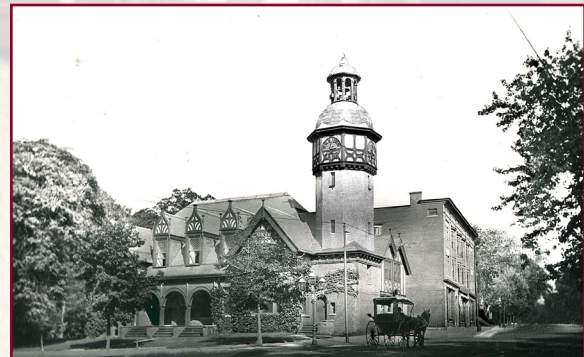


EASEMENT HIGHLIGHT

THE REHABILITATION OF SOUTH ORANGE VILLAGE HALL

The unique medieval-styled half-timber historic municipal building on the corner of South Orange Avenue and Scotland Road in South Orange, Essex County will soon have a new purpose. Landmark Hospitality has initiated rehabilitation of the former municipal building for a restaurant, beer garden and catering location.

While the building will be out of public ownership for the first time in its history, the restaurant group will adhere to the requirements of the preservation easement, which is held by the Historic Trust. The easement outlines the protected features of the National Register listed landmark including the preservation of the stucco and wood exterior, distinctive brickwork, half-timber and gable decorations, dormers, octagonal tower, windows and archways, and more.



A preservation easement is a voluntary legal agreement between a property owner and the Historic Trust that ensures the long-term protection of an historic property while allowing for new uses, upgrades and modernization that do not impact protected architectural features. The Historic Trust holds both permanent easements that have been donated by private home or business owners, and term easements that are a requirement of receiving a Trust funded capital preservation grant.



South Orange Village Hall was constructed in 1894 and designed by Rossiter and Wright in the German half-timber style of architecture. The building originally housed municipal offices and the Village's police and fire departments. South Orange Village remains the only incorporated village in New Jersey. During the 20th century the police and fire crews moved to separate facilities. In recent years, the building fell into decay, and the Village could not absorb its preservation price tag. Since Landmark Hospitality owns or manages other restaurants and venues, including several historic properties, all parties hope that the South Orange venture will be a great success to revitalize the community and save a landmark structure.



ABOUT THE TRUST

ABOUT THE NEW JERSEY HISTORIC TRUST

The Mission of the New Jersey Historic Trust is to advance historic preservation in New Jersey for the benefit of future generations through education, stewardship and financial investment programs that save our heritage and strengthen our communities.

The Historic Trust seeks to achieve its mission by serving as:

- A leading voice for preservation at the state level.
- A catalyst for preservation and community revitalization activities.
- A full partner in state policy development.

The Trust also provides financial support, protection and technical assistance through its programs:

The Preserve New Jersey Historic Preservation Fund was established by legislation in 2016 to provide an annual source of matching grants from the state's corporate business tax for historic preservation projects. Eligible applicants include nonprofit organizations and government entities. The Preserve New Jersey fund continues the work of the Garden State Historic Preservation Trust Fund (2000-2012) and the Historic Preservation Bond Program (1990-1997). Since 1990, over \$150 million in matching grants has been awarded to worthy construction and planning historic preservation projects throughout the state.

In partnership with the 1772 Foundation, the Historic Trust offers matching Capital Preservation Grants up to \$15,000 to nonprofit organizations for exterior repair and restoration projects.

The Discover New Jersey Historic License Plate Fund for Heritage Tourism provides grants up to \$5,000 to develop and promote visitor-ready sites as heritage tourism destinations.

New Jersey Cultural Trust Capital Preservation Grants protect and improve historic properties that are used by nonprofit organizations that have history, humanities and arts programming. Grants may fund projects for stabilization, repair, restoration, adaptive use, and increased accessibility. Funding is offered on a schedule provided by the NJ Cultural Trust, which also qualifies eligible organizations.

The Historic Trust offers long-term, low-interest loans through the Historic Preservation Revolving Loan Fund for the acquisition, preservation, rehabilitation, or restoration of historic properties.

An Emergency Grant and Loan Fund has limited funds for critically needed work on endangered historic resources. Currently only loans are available.

The Preservation Easement Program ensures the preservation of privately-owned properties in perpetuity using deed restrictions. The Trust initiated the first statewide program of this kind, which enables easement donors to take advantage of charitable deduction tax benefits.

The Historic Trust accepts donations of real estate through New Jersey Legacies. Property donors may realize significant income and estate tax benefits by their donations. Donated properties are resold by the Trust with protective easements to ensure their preservation.

INDEX OF SITES

- 12 Stockton Street, Mercer County, *Page 20*
- Allen House, Monmouth County, *Page 15*
- Andrew and Hannah Drake Farmstead/Brookedale Farm, Mercer County, *Page 14, 20*
- Ayres' Farm, Morris County, *Page 15*
- Buckelew/Austin/Webb/Pulda Farm Historic District, Middlesex County, *Page 15*
- Caldwell Parsonage, Union County, *Page 21*
- Cape May Lighthouse, Cape May County, *Page 19*
- Cranbury Barn Park, Corn Crib and Wagon House, Middlesex County, *Page 20*
- Cumberland County Courthouse, Cumberland County, *Page 13*
- Daniel Robert House, Somerset County, *Page 16*
- Dey Mansion, Passaic County, *Page 17*
- Dunham's Mill/Parry's Mill, Hunterdon County, *Page 19*
- East Point Lighthouse, Cumberland County, *Page 10*
- Ellis Island Recreation Pavilion, Hudson County, *Page 19*
- First Baptist Church and Parsonage, Monmouth County, *Page 10*
- First Presbyterian Church of New Vernon, Morris County, *Page 10*
- Fire Station #8, Atlantic County, *Page 12*
- Gaetano Federici Monument, *Page 10*
- George Morgan Stone House, Gloucester County, *Page 17*
- Greenfield Hall, Camden County, *Page 12*
- Historic Cold Spring Village (Ezra Norton House and Heislerville Store), Cape May County, *Page 13, 18*
- Hoboken City Hall, Hudson County, *Page 11*
- Hoboken Firehouses & Firemen's Monument, Hudson County, *Page 13*
- Hoboken Free Public Library and Manual Training School, Hudson County, *Page 13*
- Homestead Farm at Oak Ridge, Union County, *Page 17*
- In and Out Social Club, Mercer County
- Incline Plane #10 West, Warren County, *Page 11*
- Isaac Pearson House, Mercer County, *Page 14*
- Jacob Ford Power Mill Site, Morris County, *Page 15*
- James C. Rose Residence, Bergen County, *Page 12*

INDEX OF SITES

- John Prall House, Hunterdon County, *Page 20*
- Judge Nathaniel Foster House, Cape May County, *Page 13*
- Kingsland Manor, Essex County, *Page 19*
- Lafayette School, Morris County, *Page 15*
- Lambert Castle, Passaic County, *Page 16*
- Landing Railroad Station, Morris County, *Page 9*
- Loew's Theater, Hudson County, *Page 19*
- Long Beach Island Historical Museum and Fishermen's Cottage, Ocean County, *Page 20*
- Lusscroft Farm, Sussex County, *Page 21*
- Mahlon Fisher Residence, Hunterdon County, *Page 14*
- Middle Valley Chapel, Gloucester County, *Page 16*
- Moravian Church, Gloucester County, *Page 13, 19*
- Mount Zion AME Church, Somerset County, *Page 21*
- Nathan Cooper Grist Mill, Morris County, *Page 9*
- Naval Air Station Wildwood Aviation Museum: Hangar #1, Cape May County, *Page 12, 18*
- Old Newton Academy, Sussex County, *Page 17*
- Old Stone School, Cumberland County, *Page 13*
- Orange City Hall, Essex County, *Page 10*
- Rancocas Lyceum, Burlington County, *Page 18*
- Reeves-Reed Arboretum, Union County, *Page 9, 21*
- Richardson Avenue School, Gloucester County, *Page 19*
- Roebing Wire Company, Burlington County, *Page 17*
- Roger's Locomotive Company Frame Fitting Shop, Passaic County, *Page 21*
- St. Bartholomew Roman Catholic Church, Camden County, *Page 11*
- Stucile Farms, Monmouth County, *Page 20*
- The Squan Beach Life Saving Station No. 9, Monmouth County, *Page 20*
- Thomas Baird Homestead, Monmouth County, *Page 20*
- Van Kirk Homestead Museum, Sussex County, *Page 21*
- Van Ripper Hopper House & Van Duyne House, Passaic County, *Page 16*
- Vorhees Dutch Barn, Somerset County, *Page 16*
- West Jersey Depot Train Station (Glassboro Train Station), Gloucester County, *Page 13*
- William Lindsay White House, Hunterdon County, *Page 14*
- Woman's Club of Rutherford Clubhouse, Bergen County, *Page 18*



NEW JERSEY
**HISTORIC
TRUST**

2018